



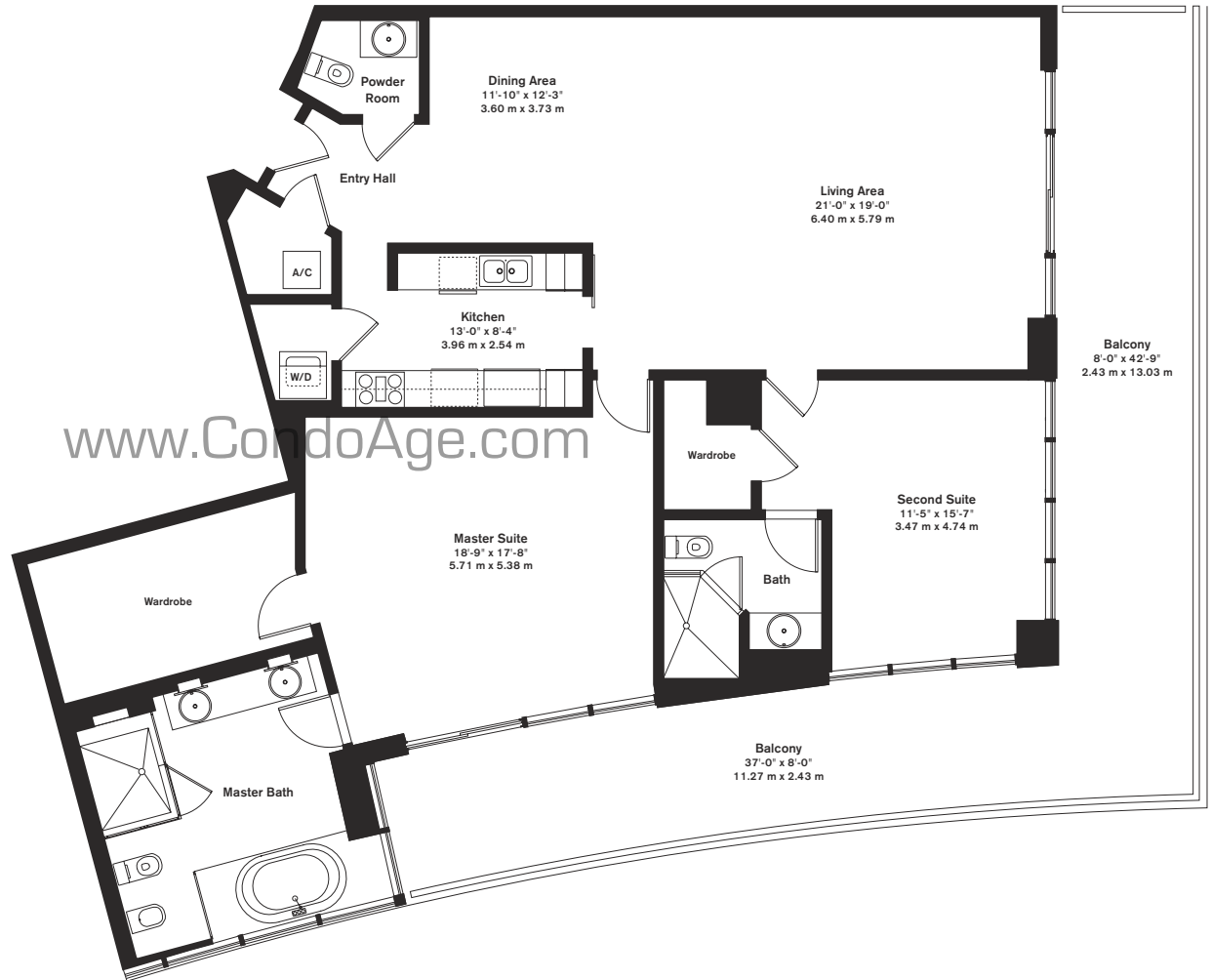
## residence F

2 bedrooms, 2.5 baths

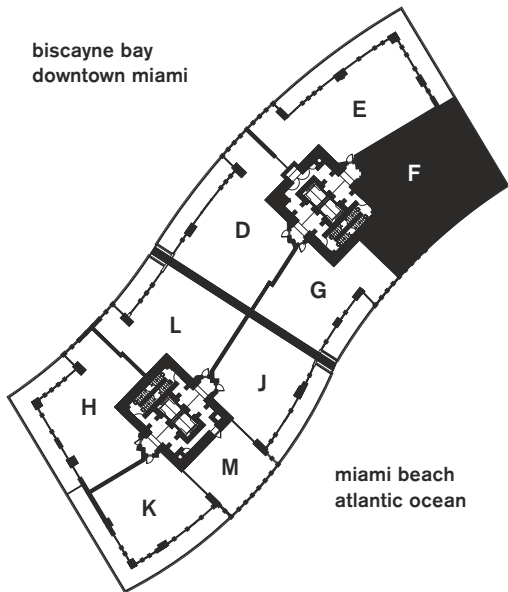
1,933 sq. ft. 179.50 m<sup>2</sup>

631 sq. ft. 58.60 m<sup>2</sup> balcony

2,564 sq. ft. 238.10 m<sup>2</sup> total



biscayne bay  
downtown miami



Stated dimensions are measured to the exterior boundaries of the exterior walls and the centerline of interior demising walls and in fact vary from the dimensions that would be determined by using the description and definition of the "Unit" set forth in the Declaration (which generally only includes the interior airspace between the perimeter walls and excludes interior structural components). All dimensions are approximate, and all floor plans and development plans are subject to change.